

## U-Crane 6 on Mercedes GLE63s AMG

The U-Crane Arm 6 tracking car is based on a Mercedes GLE63s AMG 4x4 – 5.5L V8 Engine with 575 BHP which is ideal for Higher Speed Camera Tracking, built especially to carry the U-Crane Arms. We have 2 x Mercedes Complete Packages available.

The U-Crane Arm and the Flight Head are a remotely operated gyro stabilised camera crane system which maintains the camera's stability whilst travelling at high speeds, across uneven roads or off-road. The U-Crane Arm is fully controlled from within the car and can operate at higher speeds when required.

### Package Includes / Equipment

Gyro-stabilised U-Crane Arm - Pan & Tilt axis are both gyro-stabilised

Gyro-stabilised Flighthead – Please Ask Bickers for Details

Stealth Mercedes GLE63s AMG Tracking Car fully integrated car with 5x SmallHD Monitors with Video Playback.



### The Set Up

U-Crane Arm kit comes complete with HD monitors inside the car which are linked up to a record and playback facility. The kit includes a talk-back system that consists of both 5x internal and 4x external communication devices, the 4x external devices are Motorola walkie talkies that can be used by the 'hero car' driver and 3x location coordinators.

### The U-Crane Arm works with highly Experienced Crews

1x U-Crane Arm Operator

1x Precision Driver

1x Flighthead Camera Operator (Can be arranged by Bickers)

1x Flighthead/U-Crane Arm Technician

For more information,  
please contact us.

Web

[www.bickers.co.uk](http://www.bickers.co.uk)

Email

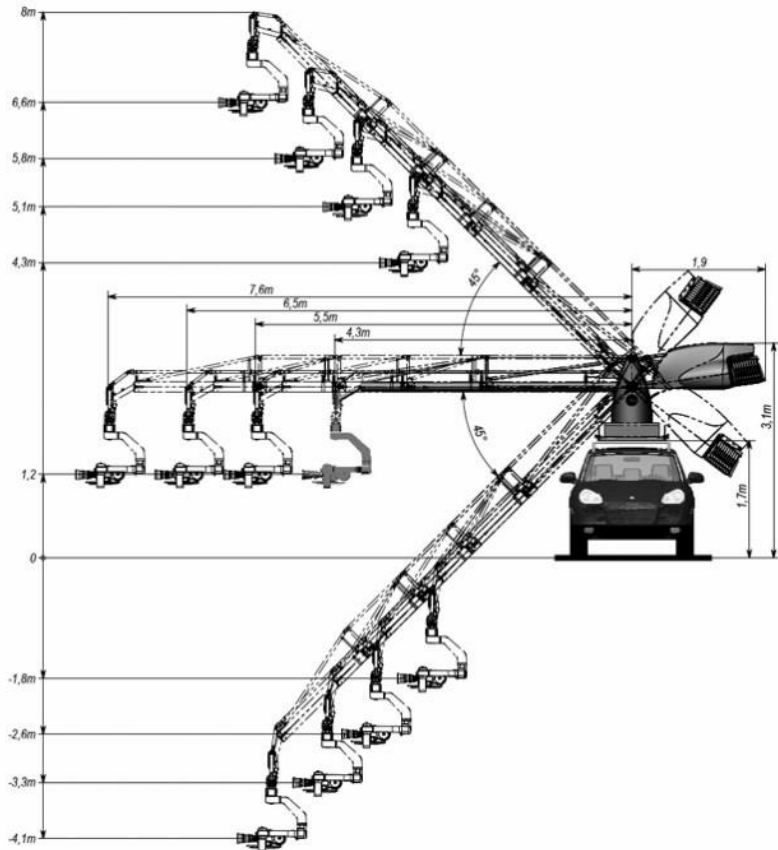
[action@bickers.co.uk](mailto:action@bickers.co.uk)

## U-Crane Arm on Mercedes GLE63s AMG

**Capabilities / Specifications**

U-Crane Arm 6 - Standard Arm – 4.3m (15') Reach		
Max Lens Heights		
Off the Front	4.3m (15')	45 Degrees Angle
Off the Rear	4.3m (15')	45 Degree Angle
Off the Side	4.3m (15')	45 Degree Angle
U-Crane Arm 6 - Long Arm – 7.6m (25') Reach		
Off the Front	6.6m (21.8')	45 Degree Angle
Off the Rear	6.6m (21.8')	45 Degree Angle
Off the Side	6.6m (21.8')	45 Degree Angle
There are also available 2 other intermediate lengths between the Standard and Extra Long Mode		

**Technical Specification**



For more information, please contact us.

**Web** [www.bickers.co.uk](http://www.bickers.co.uk)

**Email** [action@bickers.co.uk](mailto:action@bickers.co.uk)

### **Camera and Lens**

Maximum total package weight of 85kg including Flighthead. All Camera/Lens combinations can be catered for but please advise before the shoot so we can select the correct Flighthead to best suit the needs of your job/package.

If using an Optimo 24-290 Zoom, please order with it an LMB-4 2 Tray Clip on Matte Box to match this lens from your Camera Rental House.

If joystick zoom control through Flighthead console is requested by you DOP/Camera Operator, please ensure that you order a Preston FIZ 3 axis Lens Control System from your camera rental House/1st AC to facilitate this function.

We recommend using an Ultra high speed Rain Deflector as this is the only type, we find work when tracking at speed. These can be supplied by request if needed.

### **Transport**

1x Fully Enclosed Transport Truck – The U-Crane Arm travels in a fully built form, no build time required at location, its own overnight storage unit, which carries its own generator for charging if hook up power is not available.

### **Please Note**

The operation of U-Crane Arm requires 4 Active Crew Members – including Camera Operator.  
1 x Dedicated Transport Driver. Total Crew Excluding Focus Puller is 5 People.

For more information,  
please contact us.

**Web**

[www.bickers.co.uk](http://www.bickers.co.uk)

**Email**

[action@bickers.co.uk](mailto:action@bickers.co.uk)